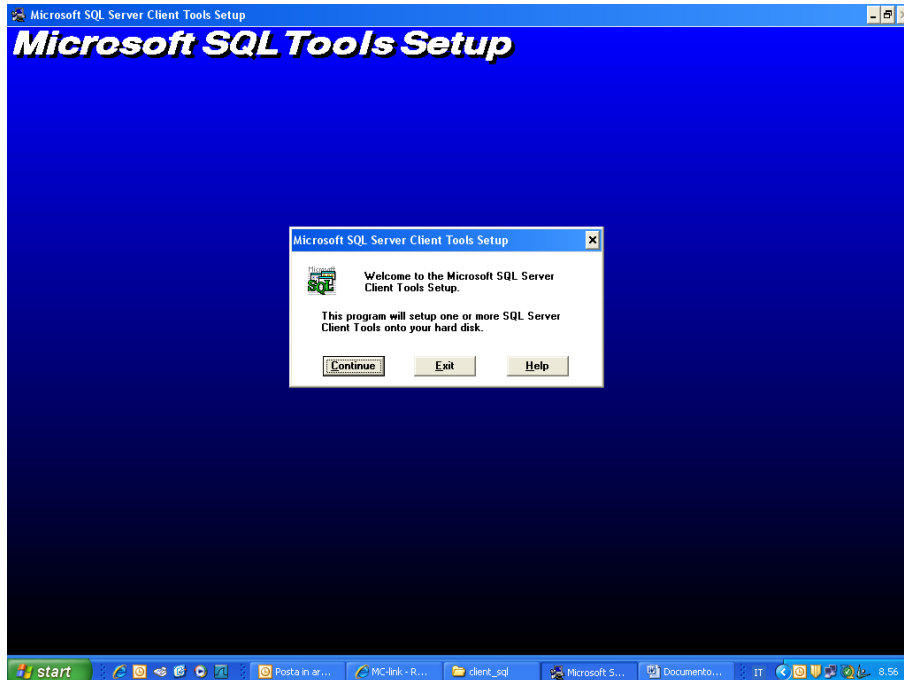
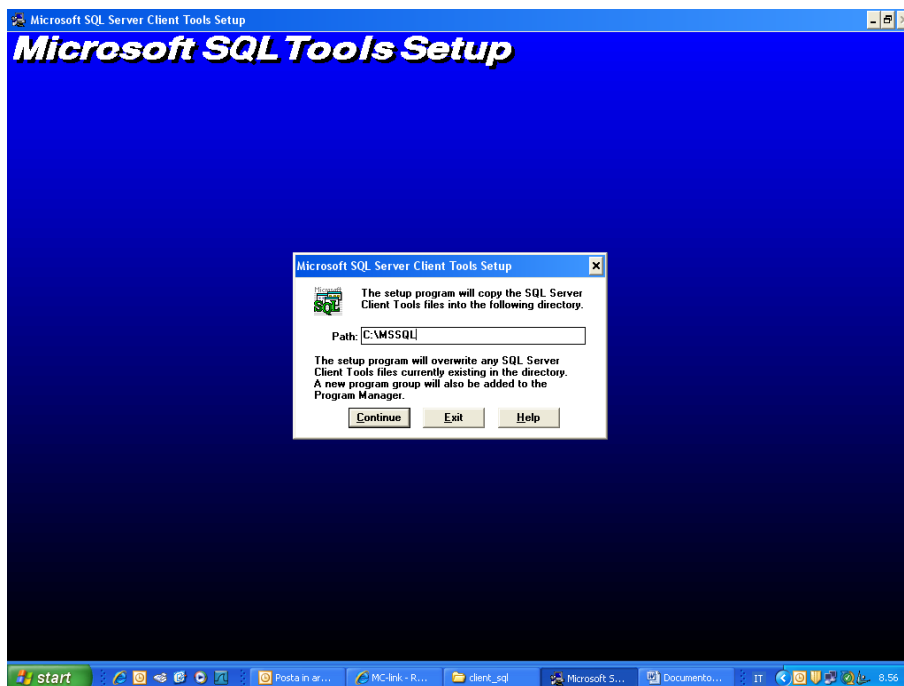


# Installazione Modulo Telematico

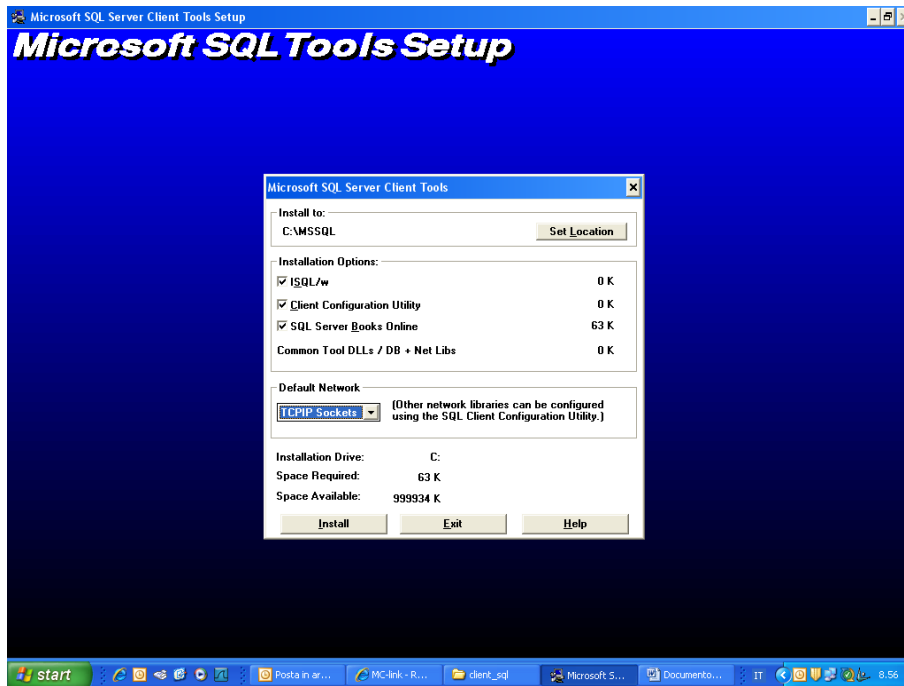
1) Eseguire il file setup.exe



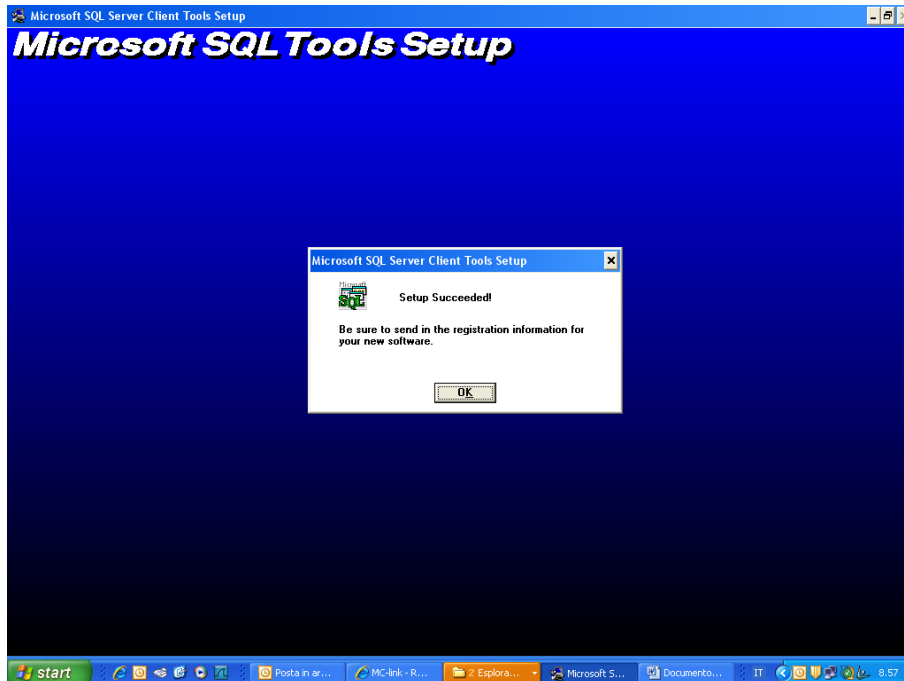
2) Cliccare sul pulsante Continue



3) Cliccare sul pulsante Continue



4) Selezionare in Default Network l'opzione "TCP/IP Sockets" e cliccare sul pulsante Install



5) Cliccare sul pulsante OK e riavviare il PC